

CareEdge-ESG Assigns ESG Rating to Grasim Industries Limited



15 April 2026

CARE ESG Ratings Limited (CareEdge-ESG) assigns CareEdge ESG 1+ Rating with an ESG score of 85.4 to Grasim Industries Limited (Grasim)

CARE ESG Ratings Limited (CareEdge-ESG), a Securities & Exchange Board of India (SEBI)-registered Issuer-pays ESG Rating Provider (ERP) and a wholly owned subsidiary of CARE Ratings Limited, assigned the ESG Rating to Grasim Industries Limited (Grasim).

Grasim is the flagship company of the Aditya Birla Group and is headquartered in Mumbai. The company operates across multiple sectors, including cement, chemicals, textiles, and financial services, and has emerged as one of India’s leading diversified manufacturing enterprises. Grasim is primarily engaged in the production of viscose staple fibre (VSF), viscose filament yarn (VFY), and chemicals such as caustic soda, while also serving as the holding company for major group businesses like UltraTech Cement and Aditya Birla Capital. Through this diversified portfolio, the company plays a significant role in supplying essential industrial inputs and consumer materials across domestic and global markets. Grasim received a **CareEdge-ESG 1+ rating** with an **ESG score of 85.4**. The ESG rating reflects its leadership position in managing ESG risk through best-in-class disclosures, policies, and performance. Please follow the [link](#) for a detailed rationale of Grasim’s ESG rating.

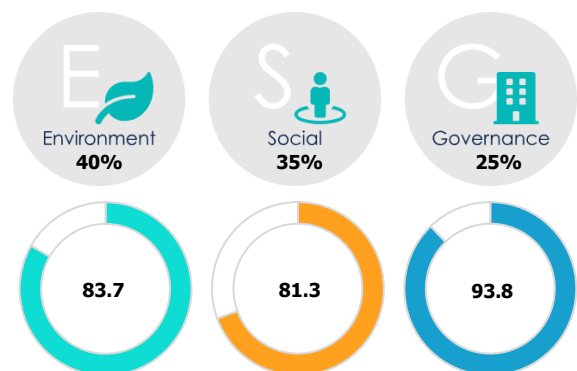
The ESG rating assigned to Grasim is underpinned by its strong and well-integrated ESG governance framework, with consistent performance across key material themes relevant to the pulp & fibre and chemicals sector. The company demonstrates robust oversight, transparent disclosures, and structured ESG management processes. Grasim has shown leadership in areas such as water stewardship, waste management, and biodiversity conservation. It has also outperformed the industry median across several themes, including carbon and other emissions management, product footprint and stewardship, product safety and quality, business ethics, and ESG oversight, strengthening its overall ESG profile and positioning it ahead of peers across multiple parameters.

ESG Score



Data Transparency Level: High
Data Reporting Boundary: Standalone
Overall Transition Pathway Trajectory: Strong
Environment Transition Pathway Trajectory: Leadership
Social Transition Pathway Trajectory: Strong

Pillar Weights & Scores



Rating Scale



Please note: all scores mention in this document are on the scale of 0 – 100

CareEdge-ESG's ratings are derived from a comprehensive analysis of the environmental, social, and governance risks and opportunities associated with a company. A composite score is calculated based on the company's performance across key indicators, addressing significant themes from the three pillars of ESG. CareEdge ESG's methodology encompasses approximately 250+ indicators across 18 themes for the pulp & fibre and chemicals businesses.

Importance of ESG ratings is rapidly increasing among investors, regulators, and other stakeholders. These ratings help investors make informed decisions by highlighting an entity's exposure to and management of non-financial risks and long-term performance objectives and values. Companies with strong ESG credentials often demonstrate superior financial performance and are more successful in attracting a diverse array of investors and raising capital. Moreover, ESG ratings offer valuable insights to rated entities through peer benchmarking and industry medians, allowing them to pinpoint areas for improvement, incentivizing them to design sustainable transitions, and encouraging responsible business practices.

Mr. Surya Valluri, Chief Sustainability Officer, Grasim Industries, said, "Grasim Industries is proud to be rated **CareEdge ESG 1+** with a score of 85.4 by India's prestigious rating agency, a strong testament to our integrated approach to sustainability." He added, "It reflects the depth of our governance framework, the credibility of our climate transition strategy, and our disciplined approach to resource management, transparency, and ethical conduct. Sustainability at Grasim is at the core of defining long-term value creation, and we remain firmly focused as we progress towards a more resilient and sustainable future."

Saikat Roy, Chief Executive Officer, CareEdge-ESG, commented, "Grasim Industries' ESG rating reflects its strong environmental and governance practices across a diverse business portfolio. The company has shown a clear commitment to efficiency-led decarbonisation, product safety and quality, circular product development, and effective board-level oversight. CareEdge-ESG's independent, data-driven approach underpins such assessments, helping enhance transparency in sustainable finance and enabling investors to take informed, sustainability-aligned decisions."

Nikunj Dube, Chief Ratings Officer, CareEdge-ESG, commented, "Grasim Industries has demonstrated a well-embedded ESG framework supported by strong governance, effective resource management, and a clear focus on climate action. The company's measurable progress in reducing emissions and energy intensity, despite operational expansion, reflects strong execution capabilities. Product-level innovations, and responsible sourcing strategies further strengthen its climate strategy. Overall, Grasim's ESG rating reflects a balanced combination of sustainability ambition, operational resilience, and governance strength."

About CARE ESG Ratings Limited

CareEdge-ESG is a category I ERP registered with SEBI and a wholly owned subsidiary of CARE Ratings Limited. With over thirty years of experience as an Indian credit rating agency, CARE Ratings' move to expand into ESG ratings through its subsidiary would help to enhance investor confidence while promoting accountability and transparency in businesses. Through our comprehensive and nuanced ESG assessments, CareEdge-ESG enables stakeholders to make informed sustainability decisions, fostering positive transformation and enhancing stakeholder trust

Analytical Contact

Nikunj Dube	Chief Ratings Officer	Nikunj.Dube@careedge.in	+91 – 72191 09995
Satabdi Mohapatra	Assistant Director	Satabdi.Mohapatra@careedge.in	+91 – 84489 98945
Sanghamitra Sarma	Analyst	Sanghamitra.sarma@careedge.in	+91 – 22-6837-4400

Relationship contact

Saikat Roy	Chief Executive Officer	Saikat.Roy@careedge.in	+91 – 84528 15872
------------	-------------------------	------------------------	-------------------

Media Contact

Mradul Mishra	Media Relations	Mradul.mishra@careedge.in	+91 – 22 – 6754 3596
---------------	-----------------	---------------------------	----------------------

CARE ESG Ratings Limited

Corporate Office: A Wing – 1102 / 1103, Kanakia Wall Street, Andheri Kurla Road, Chakala, Andheri (East), Mumbai – 400 093
Phone: +91 - 22 - 6837 4400 | CIN: U66190MH2016PLC285575 | www.careedgeesg.com

Connect: 

About Us:

CareEdge is a knowledge based analytical group that aims to provide superior insights based on technology, data analytics and detailed research. CARE ESG Ratings Limited (CareEdge-ESG) is one of the India's leading ESG rating provider fostering sustainability with ESG insights. With an aim of being a catalyst of change for a sustainable future with the most credible ESG assessments, CareEdge-ESG provides a 360-degree appraisal for the ESG performance benchmarking cum transition enabling ESG risk mitigation and enhanced decision-making capabilities for all stakeholders.

Disclaimer:

The ratings issued by CARE ESG Ratings Ltd (CareEdge-ESG) are opinions about an issuer, regarding its ESG profile and relative position in managing ESG Risk through disclosures, policies and performance and are not recommendations or suggestion, directly or indirectly to any user, to buy, sell, make or hold any investment, loan or security or to undertake any investment strategy with respect to any investment, loan or security or any issuer. These ratings do not convey suitability of an investment or adequacy of market price for the investor. They shall not form the basis for any investment decisions or analysis and shall not be substitute for the skill, judgement and caution to be exercised by the user of such ratings while making business and investment decisions. CareEdge- ESG gives no representations or warranties regarding the use of these ESG Scores and related materials and/or their fitness for a particular purpose. The agency does not constitute an audit on the rated entity. CareEdge-ESG has based its ESG ratings/score based on information obtained from reliable and credible sources. CARE-ESG does not, however, guarantee the accuracy, adequacy, or completeness of any information and is not responsible for any errors or omissions and the results obtained from the use of such information. CARE ESG reserves the right to change the ESG ratings/ score from time to time in accordance with the methodologies, policies and procedures. CareEdge ESG rating/ scoring report and any related material are meant for informational and reference purpose only and shall not be modified, reverse engineered, reproduced, or distributed, in whole or in part, for commercial purpose, in any form or by any means, or stored in a database or retrieval system. No part of the ESG rating/ score report or any other related material shall be quoted or used without CareEdge ESG's prior written consent, as an input or constituent for deriving results, outputs, inferences which have not been independently verified or validated by CareEdge, for commercial purpose or otherwise. The ESG scores / ratings have been issued by CareEdge ESG for use by users in the jurisdiction of India in accordance with the applicable regulations. Any usage of the ESG rating by the entity rated shall be for internal reference purpose, reference of investors or for usage on the webpage of the rated entity and / or in the annual report or similar usage, however in each case with appropriate source credit to CareEdge ESG. Most entities who are rated by CareEdge-ESG have paid a fee, based on the complexity of rating assignment. CareEdge-ESG or its subsidiaries/associates/promoter may also be involved with other commercial transactions with the entity. CareEdge-ESG is not responsible for any errors and states that it has no financial liability whatsoever to the users of the ratings of CareEdge-ESG.

© 2026 CARE ESG Ratings Limited. All rights reserved.